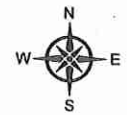


RECEIVED AND PROCESSED
BY LAND DEVELOPMENT
INITIALS

APR 03 2017



- NOTES:**
- 500 INSTALL 984F FDH ON CONCRETE PAD WITH 2x BOLLARDS. SEE DETAIL 'C' SHEET 600
 - 601 STUB 2-100mm DUCTS 0.5m ABOVE FINISHED GRADE
 - 602 INSTALL (2) 100mm DBII PVC CONDUIT L= 8.0 m. SEE DETAIL 'B' SHEET 600
 - 603 CORE FOR 2-100mm CONDUIT IN TELUS MH-84 SEE DETAIL 'A' SHEET 600
 - 604 NEW 60° BEND 2-100mm DBII PVC CONDUIT

Sheet Title:
Design

Function: **Make ready** Task: **FDH Placement**

Key Map:

BC ONE CALL
CALL BEFORE YOU DIG
1-800-485-5833
OR BY CALLING THE
UTILITY AREA 800-6000
CALL AT LEAST TWO FULL BUSINESS DAYS
BEFORE YOU PLAN TO DIG

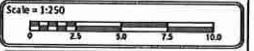
Client:
TELUS

Prepared By:
FAFL
SUITE 200 - 7485 130 ST
Surrey BC V3W 1H8

Rev	Date	Notes	QC
-	-	-	-
-	-	-	-
-	-	-	-
-	-	-	-
-	-	-	-

IFP: MARCH 14TH 2017
DRAWN BY: **IFC**
DESIGNED BY: **KADTEC SYSTEMS**

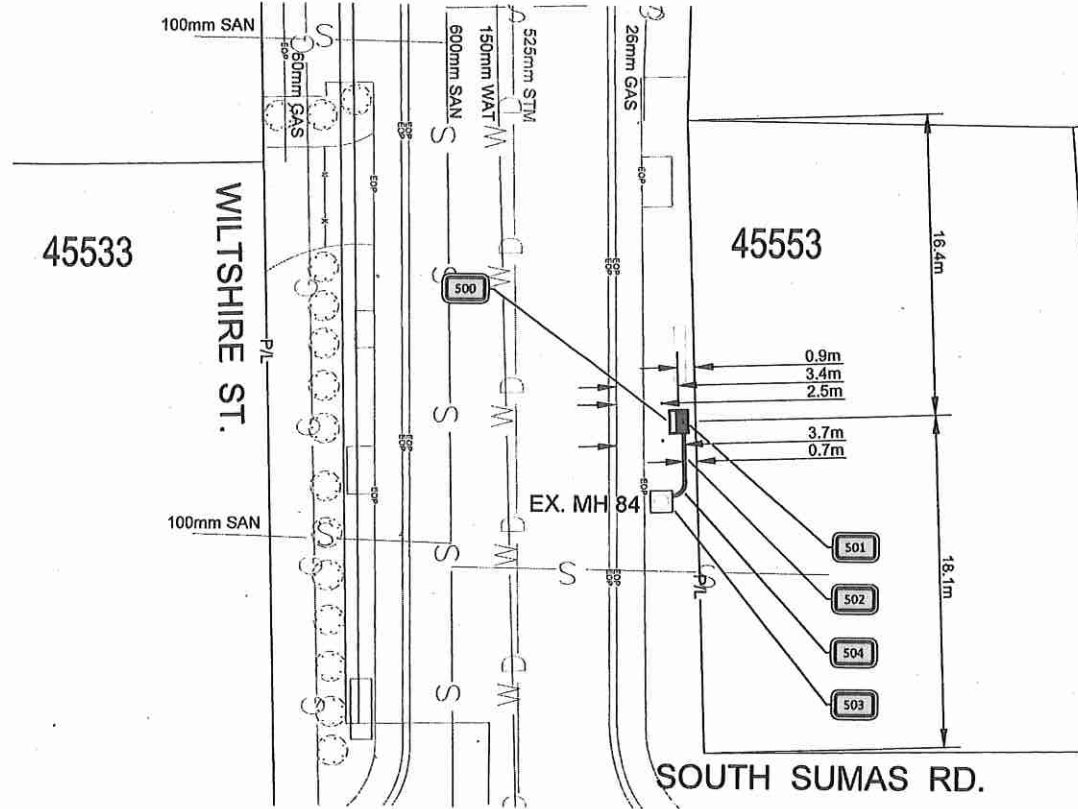
Proprietary Information
Not for disclosure except under written agreement



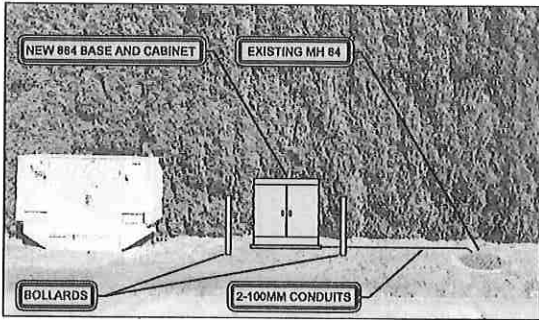
Project:
Falcon 2017
SRDS 4011A - 2625656
Sardis, BC

File Name:
(DWG) SRDS 4011A - 2625656FDH

COID SRDS	Route 4011A
Network Number 2625656	Sheet Number 600



PLAN VIEW
HORIZONTAL SCALE: 1 : 250



SOUTH SUMAS RD AND WILTSHIRE ST
FDH - SITE PLAN
N.T.S.

CAUTION:
GAS FACILITIES IN AREA
LOCATE AND EXPOSE
PRIOR TO COMMENCING WORK

METHOD OF PLACEMENT
VIA OPEN TRENCH UNLESS
OTHERWISE NOTED

LOCATE AND PROTECT ALL
OTHER UTILITIES IN FIELD

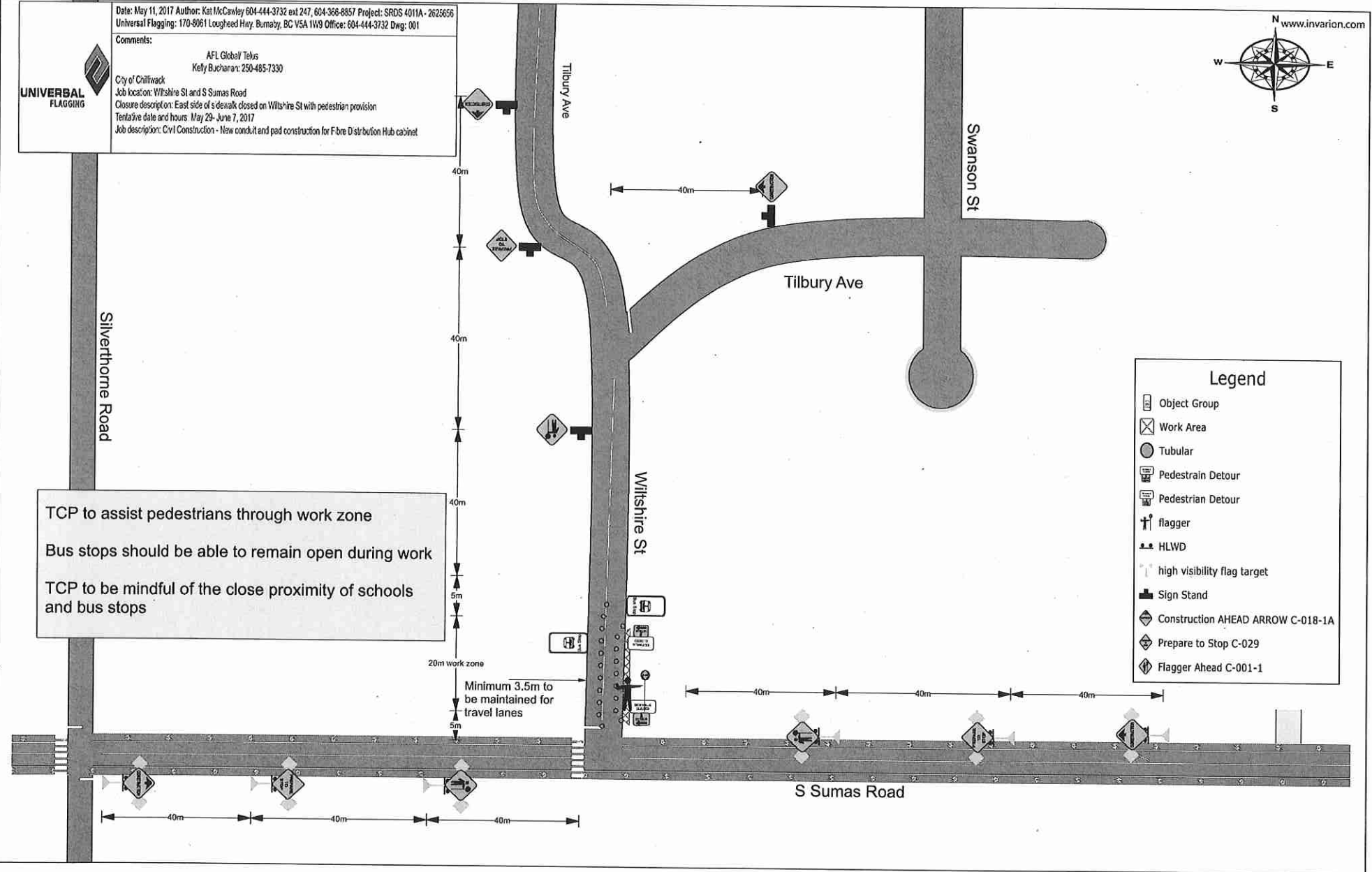
ALL MEASUREMENTS ARE IN
METERS UNLESS NOTED



Date: May 11, 2017 Author: Kat McCawley 604-444-3732 ext 247, 604-368-8857 Project: SRDS 4011A - 2625656
Universal Flagging: 170-8061 Loughheed Hwy, Burnaby, BC V5A 1W9 Office: 604-444-3732 Dwg: 001

Comments:

AFL Global Telus
Kelly Buchanan: 250-485-7330
City of Chilliwack
Job location: Wiltshire St and S Sumas Road
Closure description: East side of sidewalk closed on Wiltshire St with pedestrian provision
Tentative date and hours: May 29 - June 7, 2017
Job description: Civil Construction - New conduit and pad construction for F-bre Distribution Hub cabinet



TCP to assist pedestrians through work zone
Bus stops should be able to remain open during work
TCP to be mindful of the close proximity of schools and bus stops

Legend

- Object Group
- Work Area
- Tubular
- Pedestrian Detour
- Pedestrian Detour
- flagger
- HLWD
- high visibility flag target
- Sign Stand
- Construction AHEAD ARROW C-018-1A
- Prepare to Stop C-029
- Flagger Ahead C-001-1